

SumiDrill Power Series SDP Type (DIN)

AlCrTiN Coated Solid Carbide Drills to DIN 6537

General Features

New designed double margin

Excellent hole accuracy

Shank

DIN 6535 HAK

Sumi-Power Coating

Excellent wear resistance
and anti-adhesion

Elliptical flute design

Improved chip formation
and chip evacuation

Curved cutting edge,
optimized edge preparation

Low cutting force

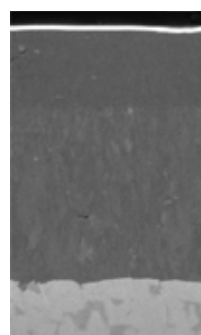


Stock Size

Ø3,0 ~ Ø12,0
Increment 0,1mm

Ø12,1 ~ Ø16,0
Standard diameter

Coating Structure



Improved anti-adhesion
AlCrTiN lubricant layer
coating with high Al content
improves friction condition.

High wear resistance
Tough and hard
AlCrTiN super multilayer

Substrate

Advantages

- The specific and optimum solution for a wide range of application conditions
- Top performance parameters, maximum feed and stable long tool life
- Double margin design for high-precision holes
- Good balance of high wear resistance and toughness
- Curved cutting edge - ideal for removing chips
- Reliable and high productivity performance

Application Range

